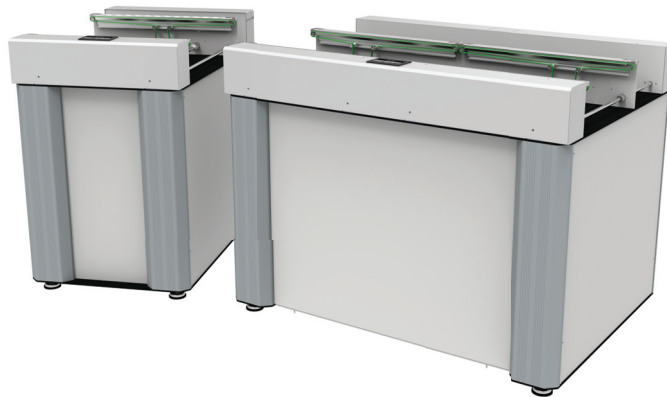


# Conveyor ED600/1200/1800



## Standard features:

- 600, 1200 and 1800 mm conveyor lengths
- Touch screen HMI
- Stable and rigid construction
- PLC controlled
- Motorized precision width adjustment
- SMEMA interface

The new series conveyors are available in three lengths, 600, 1200 and 1800 mm. Conveyor belts on the fixed and moving side are driven by the same motor, ensuring straight board infeeds and outfeeds, and minimizes wear on belts and conveyor rails.

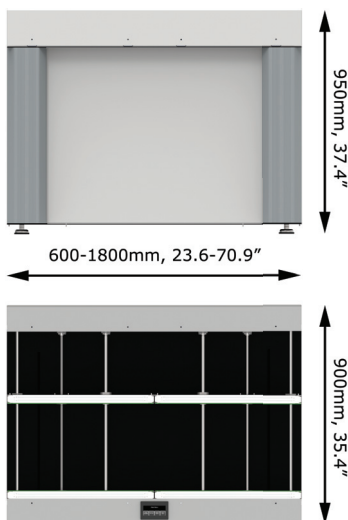
All settings/functions are controlled via the intuitive touch screen HMI. Communication with preceding and following units is done via the standard SMEMA interface, which makes the conveyor easy to install in an electronics assembly line. Conveyor width adjustment is motorized as standard.

## Technical information:

- Board transport level: 940 ± 30 mm (37 ± 1.2")
- Board length: 70 - 580 mm (2.8 - 22.8")
- Board width: 50 - 515 mm (2 - 20.3")
- Min. board thickness: 0.8 mm (0.03") standard  
0.2 mm (0.008") option
- Max. board weight: 4 kg (8.8 lbs)
- Board edge clearance: 3 mm (0.12")
- Top/bottom clearance: 75/75 mm (3/3")
- Voltage: 100 - 240 VAC, 50/60 Hz
- Max. power consumption: 0.5 kWh
- SMEMA Interface

## Options:

- Adjustable transport speed via touch screen or potentiometer
- Automatic width adjustment
- Board stop for inspection with adjustable stop interval
- Safety covers
- Good / Not good signalling (OK/NG)
- Not good (NG) inspection
- Inspect/reject lift
- See order guide for more options



Order codes: ED600 Conveyor, K-017-2000  
ED1200 Conveyor, K-017-2001  
ED1800 Conveyor, K-017-2002